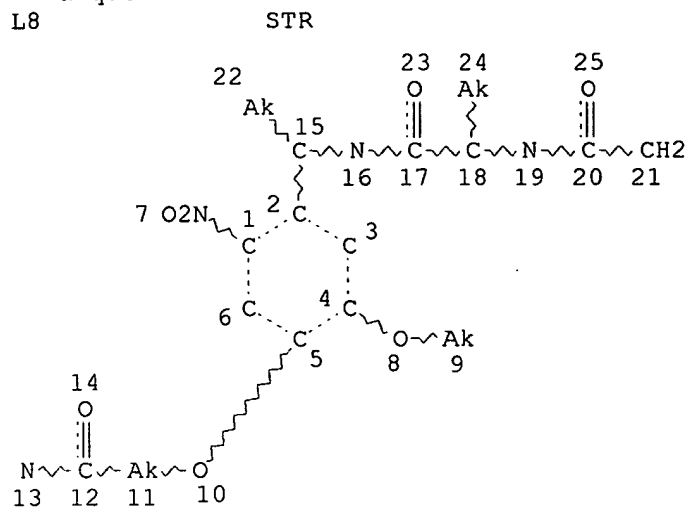


=> d que  
L8



## NODE ATTRIBUTES:

CONNECT IS E1 RC AT 9  
 CONNECT IS E2 RC AT 11  
 CONNECT IS X2 RC AT 13  
 CONNECT IS E2 RC AT 16  
 CONNECT IS E2 RC AT 19  
 CONNECT IS E1 RC AT 22  
 CONNECT IS E1 RC AT 24  
 DEFAULT MLEVEL IS ATOM  
 GGCAT IS LOC AT 22  
 GGCAT IS LOC AT 24  
 DEFAULT ECLEVEL IS LIMITED

## GRAPH ATTRIBUTES:

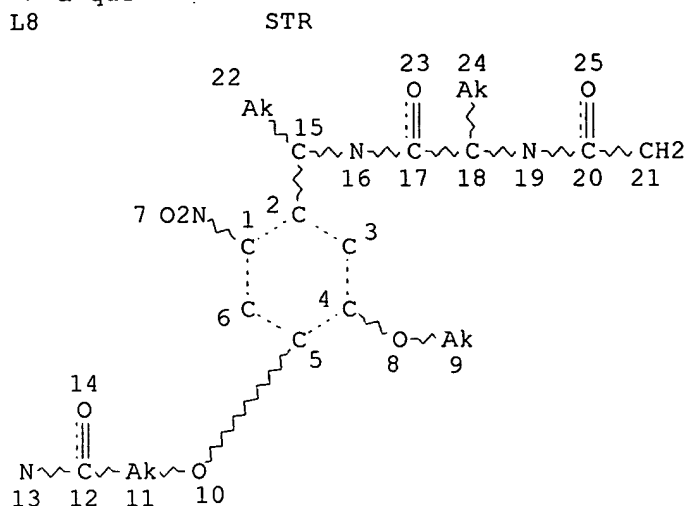
RING(S) ARE ISOLATED OR EMBEDDED  
 NUMBER OF NODES IS 25

## STEREO ATTRIBUTES: NONE

L10 SEA FILE=REGISTRY SSS FUL L8

*Considered - 04/01/03  
Mzc*

=> d que  
L8



## NODE ATTRIBUTES:

CONNECT IS E1 RC AT 9  
CONNECT IS E2 RC AT 11  
CONNECT IS X2 RC AT 13  
CONNECT IS E2 RC AT 16  
CONNECT IS E2 RC AT 19  
CONNECT IS E1 RC AT 22  
CONNECT IS E1 RC AT 24  
DEFAULT MLEVEL IS ATOM  
GGCAT IS LOC AT 22  
GGCAT IS LOC AT 24  
DEFAULT ECLEVEL IS LIMITED

## GRAPH ATTRIBUTES:

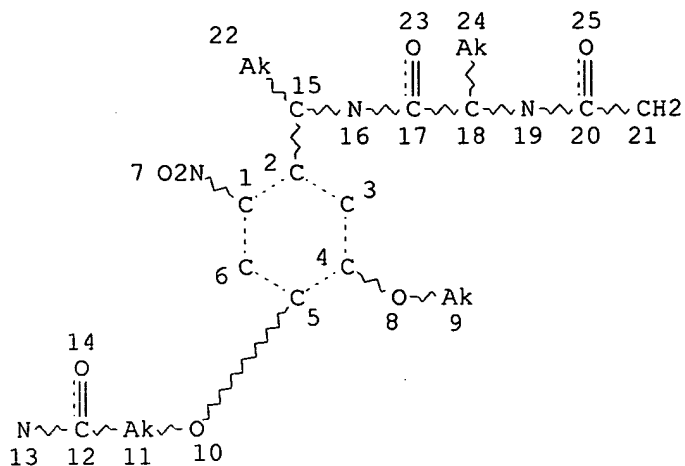
RING(S) ARE ISOLATED OR EMBEDDED  
NUMBER OF NODES IS 25

## STEREO ATTRIBUTES: NONE

L11 9 SEA FILE=MARPAT SSS FUL L8  
L12 0 SEA FILE=MARPAT ABB=ON PLU=ON L11/COM

L8

STR



## NODE ATTRIBUTES:

CONNECT IS E1 RC AT 9  
 CONNECT IS E2 RC AT 11  
 CONNECT IS X2 RC AT 13  
 CONNECT IS E2 RC AT 16  
 CONNECT IS E2 RC AT 19  
 CONNECT IS E1 RC AT 22  
 CONNECT IS E1 RC AT 24  
 DEFAULT MLEVEL IS ATOM  
 GGCAT IS LOC AT 22  
 GGCAT IS LOC AT 24  
 DEFAULT ECLEVEL IS LIMITED

## GRAPH ATTRIBUTES:

RING(S) ARE ISOLATED OR EMBEDDED  
 NUMBER OF NODES IS 25

## STEREO ATTRIBUTES: NONE

0 SEA FILE=BELLSTEIN SSS FUL L8